



Incident Management using SARTopo

Patty Lindsay,
Mountaineer Area Rescue Group

4/26/17

This work by the Appalachian Search and Rescue Conference
[and insert name here] is licensed under the Attribution-ShareAlike
4.0 International License (CC BY-SA 4.0) .





History: 2015

- New laptops
- SOG#3 Map Setup and Printing rewritten
 - SARTopo instead of Terrain Navigator Pro
- Small group classes on how to print a map with SARTopo



History: 2016

- SARTopo Operating Guide created
- SOGs
 - #12, #12B – Collection of GPS data
 - #13 – Use of GPS in the field
- First 8-hour SARTopo class in October
- SARTopo used at searches / Sims
 - Rivesville, Cheat Lake Sim, Renick, White Park Sim



History: 2017

- Second 8-hour SARTopo class (without the network headaches!)
- More fully deployed at Canaan Valley
- Developing and refining best practices
- First 4-hour class:
 - Everything but drawing areas and writing tasks
 - More in depth on GPS prep and collection



Now

TaskPrep Utility:

Our TAF form for SARTopo assignments

- FTL notes on back

Set for all TAFs:

- Safety message
- Radio freqs
- Base phone number

Generate GPS assignments faster



Now

SOG#3 : Managing an Incident using SARTopo

- Soon to be released, submitted to BOD
- Integrates:
 - SOG#3 Map Setup and Printing
 - SOG#12, and #12B Collection of GPS Tracks
 - Workflow portion of SARTopo Operating Guide
- Updated:
 - Incident checklist
 - Lessons learned -> Evolving best practices
 - One source



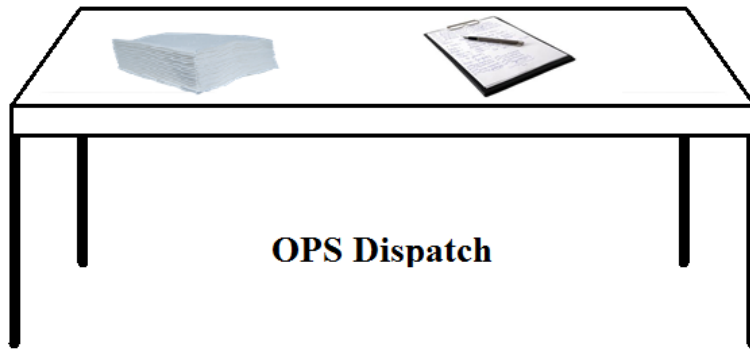
Example: Old SOG#3 Content

Chapter 1 Incident Checklist

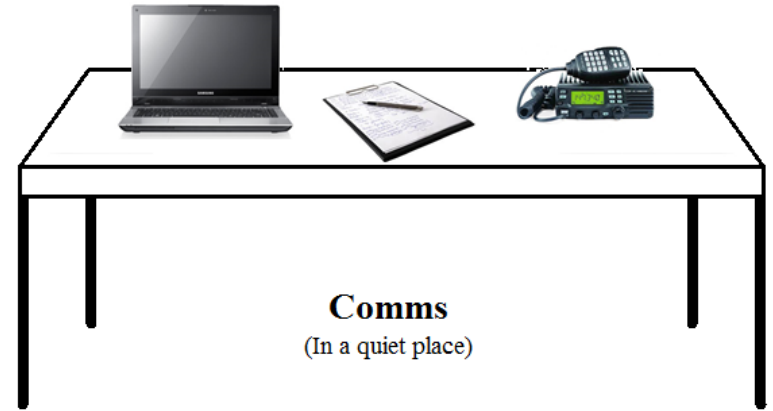
| | INITIAL INCIDENT RESPONSE - PLOPS | Reference |
|--|--|---------------------|
| | Setup initial computer | 2.1 |
| | If reliable Internet is available: Connect to the Internet and start SARTopo | 3.2 |
| | Otherwise: Start SARTopo offline | 3.3 |
| | Create data folders for the Incident | 3.1 |
| | Create IC, LKP, PLS or IPP marker(s) in SARTopo | 3.4 |
| | Center the map on a marker | |
| | Save the map using incident ID convention (SSYYYYMMDDA) | 3.5 |
| | If needed, print maps with desired base layer for "paper" planning | 9.1 |



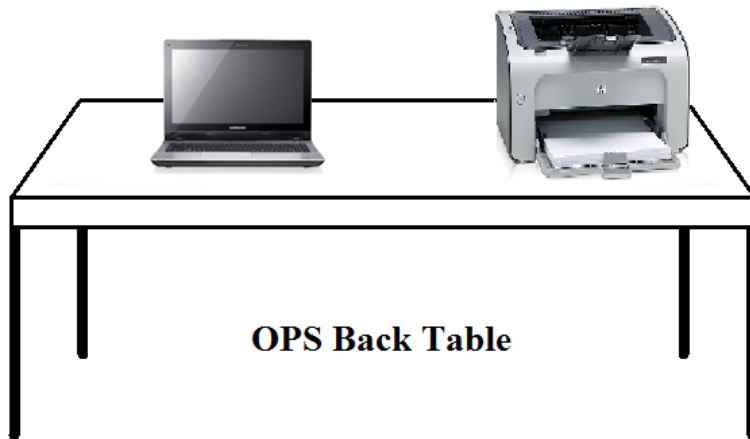
SARTopo – Large Incident



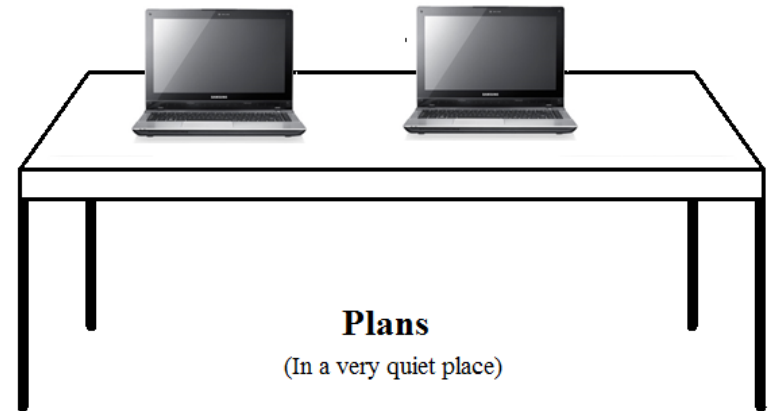
OPS Dispatch



Comms
(In a quiet place)



OPS Back Table



Plans
(In a very quiet place)



TAF Forms

1. Resource Type: GROUND



Search and Rescue

2. Assignment #: A01-1

Task Assignment Form

3. Priority:



ICS 204-SAR (1 of 2)

7. Mission Number / Incident Name

WV20170610A

8. Dispatch Number

T01 - 01

9. Team Identifier

Alpha

11. Branch

12. Division/Group

13. Map Datum: WGS84

14. Task Instructions

Type 1 search (Speed over thoroughness).


Area bounded by Pineview drive on northeast, Pineview Dr on southeast, line along northeast side of Birch Towers, northwest edge of parking lot

Area Corners (NE most then CW): 17S ND 89707 90839, 17S ND 89806 90728, 17S ND 89793 90692, 17S ND 89682 90619

A
S
S
I
G
N



Task Log

|  | | TASK ASSIGNMENT LOG MOUNTAINEER AREA RESCUE GROUP FORM ICS 204A.SAR Rev.2017.PAL | | | 1. Incident Name: <i>WV20160503A</i> | | | |
|---|--------------|---|--------------|--------------|--|--------------|---------|-------------|
| 2. Operational Period # <i>01</i> | | From: (date / time) <i>1500</i> | | | To: (date / time) | | | |
| Dispatch # | Assignmt # | Team Identifier | Type of Team | # of Persons | Task | Time Out | Time In | Total Hours |
| <i>01</i> | <i>A01-1</i> | <i>Alpha</i> | <i>K9</i> | <i>3</i> | <i>Segment A01</i> | <i>15:44</i> | | |
| | | | | | | | | |
| | | | | | | | | |



Task Numbers

Assignment Number

- Every task has one
- Does not imply order
- Tasks written by Operations
 - OPS001, OPS002, etc
- Tasks written by Plans
 - A01-1, A01-2 <- tasks that search segment A01
 - PLN001 <- any others written by Plans

Dispatch Number

- Every executed task has one
- Assigned in order dispatched
- T01-03 <- Third task dispatched in first Op Period



TAF Paper Copies

- Ops Back Table prints 1 copy, 2 sided

Front

Back : FTL Info / Notes



TAF Paper Copies

- FTL is briefed and gathers team names
- Front is copied, placed in “In Progress” folder
- Team gets the 2-sided copy
- At debrief, form pulled from a stack of blank forms
- Debrief form stapled to base copy of TAF front
- Debrief map printed after GPS tracks and clues are loaded to SARTopo, stapled to TAF and debrief



TaskPrep Utility

Inputs:

- Export file from SARTopo
- Fillable-PDF TAF file
- Configure file:
 - Map SARTopo fields to PDF Fillable Fields
 - Text for safety message, radio freqs, etc

Output

- Filled, but editable TAF PDFs
- GPX files, one for each assignment



TaskPrep Utility

Task Prep [Minimize] [Maximize] [Close]

Input: SARTopo Backup GPX File
C:/IncidentData/WV20160503A/Assignments/WV20160503A.gpx [Browse]

Output: Assignment Folder
C:/IncidentData/WV20160503A/Assignments/ [Browse]

Fillable TAF PDF #1
C:/IncidentData/Forms/MARG/MARG_TAF_for_SARTopo.pdf [Browse]

Fillable TAF PDF #2 (Optional)
[Browse]

[Cancel] [Config] [Next]



TaskPrep Utility

| | PDF Field | Text |
|-----|----------------|--|
| Del | base_phone_num | 304-304-1234 |
| Del | freq_command | Echo |
| Del | freq_tactical | FRS1 |
| Del | incident_id | WV20160503A |
| Del | incident_name | Smith |
| Del | mag_declin | -9 |
| Del | map_coord | USNG |
| Del | map_datum | WGS84 |
| Del | safety_message | Beware of Lions, and Tigers, and Bears, Oh My! |

Add:



TaskPrep Utility

76 Select Assignments

| Operational Period | Assignment | Resource Type | Status |
|--|---|---------------|------------|
| <input type="checkbox"/> 01 | <input type="checkbox"/> A01-1 T01-2 | GROUND | INPROGRESS |
| <input type="checkbox"/> PT1 - Planning | <input type="checkbox"/> A02-1 | GROUND | DRAFT |
| | <input type="checkbox"/> A03-1 | GROUND | DRAFT |
| <input checked="" type="checkbox"/> PT3 - Printing | <input checked="" type="checkbox"/> A05-1 | GROUND | PREPARED |
| | <input checked="" type="checkbox"/> A07-1 | GROUND | PREPARED |
| <input type="checkbox"/> PT4 - To Be Assigned | <input type="checkbox"/> PLN001 | GROUND | PREPARED |

Generate TAF 1
 Generate TAF 2
 Generate GPX



Debrief Map



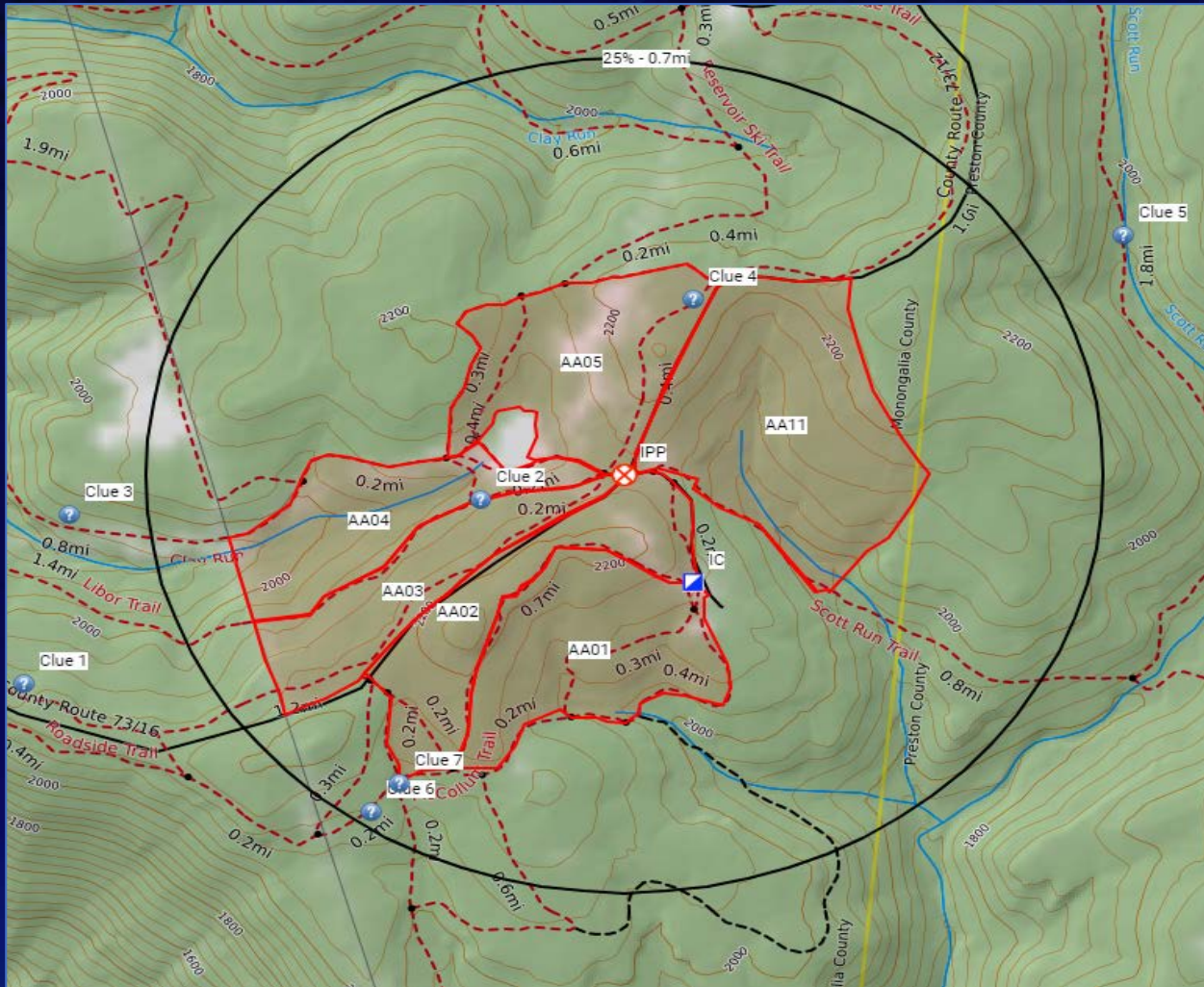


Segment Map



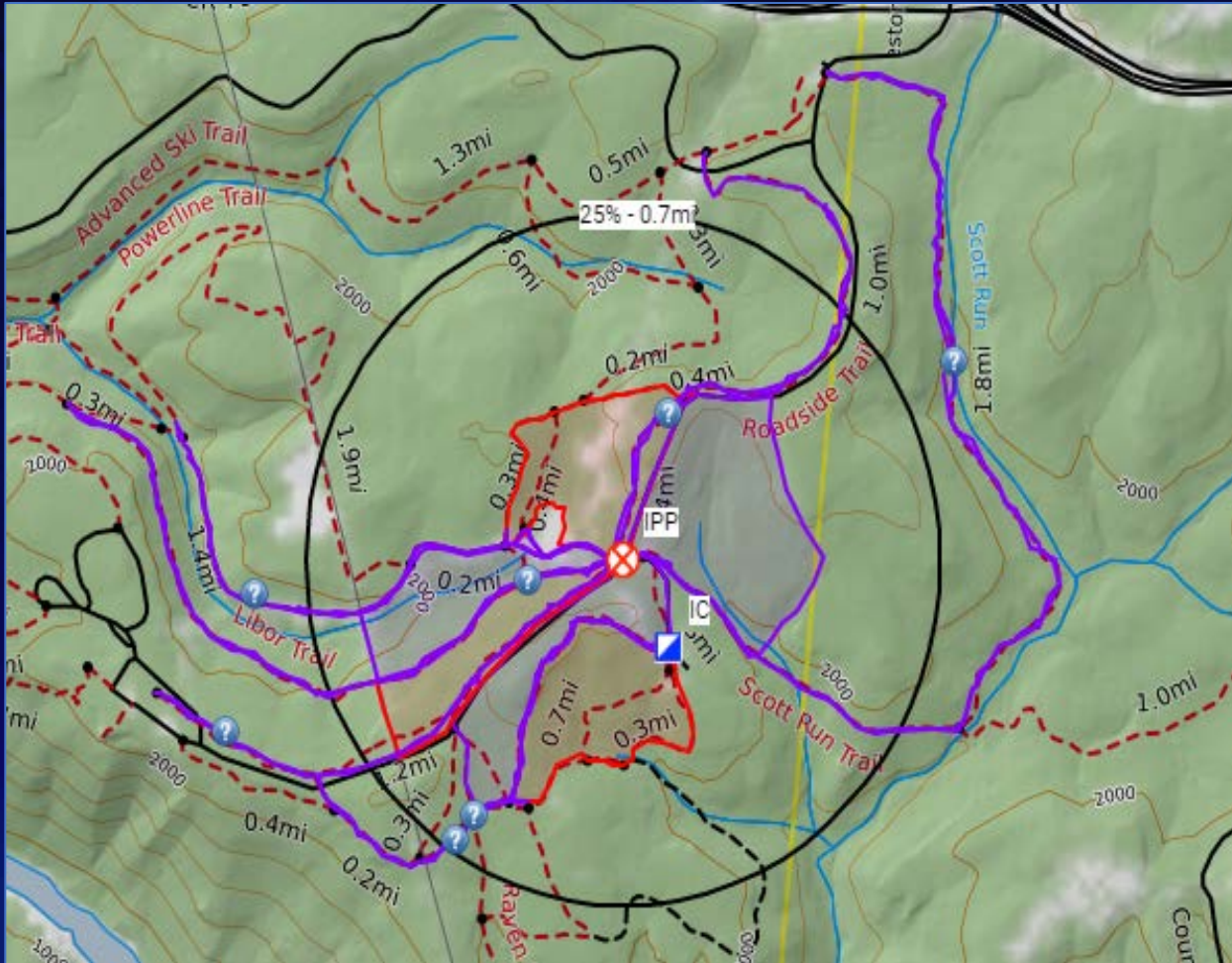


Clue Map





Task Progress Map Projector?



| Task Status Legend | |
|--------------------|-------------|
| | Draft |
| | Prepared |
| | In Progress |
| | Completed |



SARTopo Classes

8 Hour Class

- 'SARTopo Operations'
- For all base staff
- Class limit is 15
- Work in teams of 5
 - Experience SARTopo as a collaborative platform
- Covers full cycle of Incident
- Draw lines and polygons
- Write assignments
- Not hands on with GPS
- Online version coming



SARTopo Classes

4 Hour Class

- 'SARTopo Ops Specialist'
- For Ops Back Table, and Comms
- Class limit is 5
- Work individually
- Does not cover planning function
- No drawing or writing of assignments
- Hands on with GPS